

**1953-54
Pearl Borg
International
President**



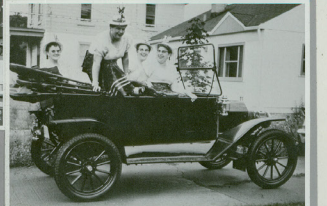
1953-54 Executive Committee members, standing, from left: Past National President Helen Seewers, Vice President Chris McElravy. Seated, from left: Executive Secretary Doris Heinen, President Pearl Borg, Treasurer Narcille Gouger.



1953-54 International Board members, standing, from left: Margaret Moyer, Dorothy Bleecker, Kathy Lienu, Peggy Rigby, Lois Zoerb, Jane Pfeifer, Fanny Peil, Corrine Krug and Dorothy Waugh. Seated, from left: Doris Heinen, Narcille Gouger, Pearl Borg, Chris McElravy and Helen Seewers.



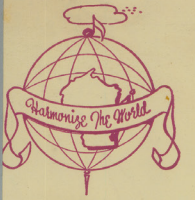
Immediately following their win, the Big Four and President Lois Zoerb appeared on a Schlitz Beer commercial, missing the celebration party.



The Big Four (1953) humming for the photographer preparing their record album cover. From the left, Lucille Miller (tenor), Jane Thompson (lead), Sarah LeMaster (baritone) and Bertha Bradley (bass).



1953-54 The Big Four, 1953 Queens of Harmony, from Chillicothe, Illinois. Inez "Junior" Thompson, lead; Lucille Miller, tenor; Bertha Bradley, bass; Sarah LeMaster, baritone.



the **pitch pipe**

PITCH

SEPTMBER, 1953

Sweet Adelines, Inc.



1953-54 The Castle Building in downtown Tulsa housed our first office.

SWEET ADELINES
Barbershop Arrangements

SONGS FOR WOMEN

I LOVE YOU IN THE SAME OLD WAY / THE LOST CHORDS - HOME BY THE SEA / ON THE BANKS OF THE WABASH / I WANNA BE A MAJESTY - SEE LOVE / MY CONNY ISLAND PAL / IN THE EVENING BY THE MOONLIGHT / MY SWEETHEART OF YESTERDAY / SUGARCANE JUBILEE - WISH YOU WERE IN THE SPRINGTIME

PUBLISHED BY OZIE WESTLEY & COMPANY, MIAMI, FLORIDA

PRICE \$1.00

SWEET ADELINES, INC.

7th ANNUAL INTERNATIONAL
CREAM CITY CONVENTION
AND
QUARTETTE COMPETITION

MILWAUKEE No. 1
WAUWATOSA No. 1
HARMONY

MILWAUKEE, WISCONSIN
OCTOBER 22, 23, 24, '53

The Milwaukee Journal followed up the convention with this feature article on November 22, 1953 - used with permission of the journal.

**1954-55
Dorothy Bleecker
International
President**



1954-55 The Mississippi Misses, 1954 Queens of Harmony, from Fort Madison, Iowa. Nancy Bergman, tenor; Marcy Paul, baritone; Rose Rump, bass; Darlene Kraus, lead.

Off To Buffalo

Words and music by Nancy Bergman. As Sung by the Mississippi Misses. Arranged by the Composer.

"HI NEIGHBOR"

SWEET ADELINES, INC.

8th ANNUAL INTERNATIONAL
Convention and Quartet Competition
1954
BUFFALO, N. Y.
"The City of Good Neighbors"

SECOND PLACE

NORTHEASTERN DISTRICT CHORUS CONTEST
SPONSORED BY BERGEN COUNTY CHAPTER TEANECK, N. J.
SWEET ADELINES, Inc.
MAY 8, 1954

The Marlboro (Massachusetts) Chapter received this marvellous bit of publicity for Sweet Adelines, Inc. - used with permission of the Worcester Sunday Telegram.

Quartet Harmonies for Women

Sweet Adeline Showcase

APRIL SHOWERS
CRAZY RHYTHM
TIME AFTER TIME
JUST LIKE A BUTTERFLY
THAT WONDERFUL MOTHER OF MINE
YOU'RE THE FLOWER OF MY HEART, SWEET ADELINE
THEY MADE IT TWICE AS NICE AS PARADISE, AND THEY CALLED IT DIXIELAND
I'M LOOKING OVER A FOUR LEAF CLOVER
WHERE THE SHY LITTLE VIOLETS GROW
BREEZIN' ALONG WITH THE BREEZE
LOVE ME AND THE WORLD IS MINE
TELLING IT TO THE DAISIES
MY HEART STOOD STILL
RURAL RHYTHM

PRICE \$1.50 IN U.S.A.

Remick Music Corp. • New York, N. Y.



1954-55 International Board members, seated, from left: Executive Secretary Doris Heinen, Vice President Christine McElravy, President Dorothy Bleecker, Treasurer Narcille Gouger, and Corrine Krug. Standing, from left: Nancy Bergman, Margaret Moyer, Lucille Von Arx, Helen Seewers, Jane Pfeifer, Lois Zoerb, Pearl Borg, Doris Radke, Kathy Lienu and Grace Puryear.